

Annexture - A

BOQ FOR INTERIOR FURNITURE WORK OF REGIONAL OFFICE OF CENTRAL BANK OF INDIA, NAGPUR

S.No.	Item	Unit	Qty.	Rate	Amount
1	False Ceiling (POP / Gypsum Board) :- Providing and fixing false ceiling of 12.5 mm th. Of Gypsum Board which includes G.I.Perimeter channel (MF6) of size 0.40mm th. (having one flange of 20mm and another flange of 30mm and web of 27mm) along with perimeter of ceiling, screw fixed to brick wall, concrete surface, partition with the help of nylon sleeves and screws at 610mm centers. Thereafter suspending G.I intermediate channel (MF7) 600mm. c/c of size 45mm (0.9mm th.with two flanges of 15mm each) from the soffit at 450mm center with connecting angle (i.e ceiling angle) of width 25mm x 10mm x 0.40mm th. Fixed to soffit with G.I. cleat and teel expansion fasteners. Ceiling sections (MF5) of 0.55mm th.having knurled web of 51.5 mm and two flanges of 26mm each with lips of 10.5 mm are then fixed to the intermediate channel with the help of connecting clip and in direction perpendicular to the intermediate channel at 450mm centers. 12.5mm tapered edge is then screw fixed to ceiling section with drywall screws at 230mm centers. Screws fixing is to be done mechanically with suitable attachment. The boards are to be joined and finished so as to have flush look which includes filling and finishing the tapered & square edges of the boards with jointing compound, joint paper tape and two coats of drywall top coat suitable for gypboard. The items includes for light fitting, grill diffusers and cut out.	Sq.m.	255		
2	Providing & fixing in position false ceiling in Armstrong 600X 600 mm X 15/16 mm Dune Supreme RH 99 Prima tile with Tegular edge framework as specified by Armstrong Co. with suspenders wherever required. Making necessary framework for A.C. ducting, if any, and necessary cutouts for diffusers and light fittings, taping and finishing to proper line & level, including making grooves and trap doors for A.C.unit in 18mm thick M.R.Grade Plywood with Stainless Steel hinges &locks with moulding 1" x 1"for edges including finishing with White Plastic Emulsion Paint etc. complete in all respects.	Sq.m.	140		
3	Same as above but of PVC Tiles/ Cement tiles Modular false ceiling	Sq.m.	0		



S.No.	Item	Unit	Qty.	Rate	Amount
4	Providing and fixing in position partly glazed & partly panelled partition made of 50 mm x 50mm x 1.2mm medium duty aluminium hollow square pipes framed at 0.60 m. to 0.45 m c/c both ways covered with 8 mm BWR grade ply and 1mm multi colour laminate of approved shade and make with 10 mm thick glass panel with etching as per design and / or necessary beading patti including 3 coats of french polishing including all necessary fittings etc. complete.	Sq.m.	102.25		
5	Providing & fixing of Solid partition made of 50 mm x 50mm x 1.2mm medium duty aluminium hollow square pipes framed at 0.60 m. to 0.45 m c/c both ways covered with 8 mm BWR grade ply and 1mm multi-colour laminate of approved shade and make 8 as per design and / or necessary beading patti including 3 coats of french polishing including all necessary fittings & fastners etc. complete.	Sq.m.	53		
6	Providing & fixing of Partially Glazed doors in single leaf 35 mm thick, finished with approved 1mm th. Laminate on both faces with / without glazing and venetians in the positions shown on the drawings or as directed, all necessary beads, moulding and lipping, Stainless Steel fixtures and fastenings with CP / brass mortise lock, Stainless Steel handles on both sides, stoppers and exposed woodwork finished with French-polish complete.	Sq.m.	12		
7	Providing & fixing of Partially solid doors in single/double leaf 35 mm thick, finished with approved 1mm th. Laminate on both faces with / without glazing and venetians in the positions shown on the drawings or as directed, all necessary beads, moulding and lipping, Stainless Steel fixtures and fastenings with CP / brass mortise lock, Stainless Steel handles on both sides, stoppers and exposed woodwork finished with French-polish complete.	Sq.m.	11		



S.No.	Item	Unit	Qty.	Rate	Amount
8	Providing & fixing of Low ht./ medium height partition with wicket gates : Providing and fixing in position low / medium height partition made of 50 x 50 x 1.2mm medium duty aluminium hollow square pipes framed at 0.6 m to 0.45 m c/c both ways covered with 8 mm BWR grade ply and 1mm thick laminate of approved shade & make, both sides including necessary opening / outing for receiving cheques & other papers, and to receive 12 mm th. Float glass including all necessary opening for electric / telephonic conduits etc. as per requirement.	Sq.m.	43		
9	Providing and fixing 12 mm thick glass with etching as per design for low height partitions held with TW molding/SS clits (D brackets). All exposed glass edges with rounded moulding and crystal polish. All exposed woodwork to be finished in 3 coats of French polish/ melamine polish.	Sq.m.	19.5		
10	Providing and fixing in position 32/35mm thk partially glazed Solid Core Flush door shutters to match the partitions including 2nd class BTC (Berma Teak Wood) frame of 100 X 50mm finished with 1.0 mm thk approved laminate on both sides including providing 10 mm thk. etched glass fixed with 6mm thick seasoned Teak wood lipping to edges duly polished/painted in matching shade, Dorma/ Godrej/ Hefle make floor spring / door closure, mortise lock of Godrej with computerised key, SS handles, 3 Nos. S.S.Butt hinges (125x32x2mm), S.S.tower bolt 150 mm etc. complete as per the directions of Engineer. Samples of all Hardware fittings to be got approved from the Architect prior to its use at site.	Sq.m.	11.5		
11	Same as above but solid doors with all asseccories.	Sq.m.	8.5		
12	Providing & fixing of "L" shaped Tables as per drawing having size of 1500 x 1500 mm & width of 1150 mm made up of 18 mm thk. Plywood from all side also having open space for C.P.U. & Drawer, shutter arrangement and Metal Key Board tray & trolley (ebco make). All external surface shall be finished with multicolour laminate & all internal surfaces shall have 0.8 mm thk. laminate including necessary sliding channel for drawer, brass hinges, Godrej lock and all accessories etc. complete.	Nos.	20		



S.No.	Item	Unit	Qty.	Rate	Amount
13	Providing & fixing Tables of 2'5" height to be made up of 18mm. thk. Plywood framework and open space for C.P.U. & Drawer, shutter arrangement on other side of Key Board drawer. The table should have necessary holes of required sizes for wire managers. The counter should have necessary passages & ledges for data cables, electrical cables and telephone lines. The counter should be finished with 1.0mm. Thk. Laminate of approved color & shade from external side and 0.8 mm thk. laminate from inside. All the exposed edges of plywood including lower edges should have lipping patti. Lipping patti should be finished in polish. The cost should include necessary hardware Moulding, handles & Godrej make drawer locks etc. complete as per design.				
a	Size 1500 x 600	Nos.	11		
b	Size 1830 x 600	Nos.	3		
14	Providing & fixing of Running Tables of 2'5" height and 2' width to be made up of 18mm. thk. Plywood framework and open space for C.P.U. & Drawer, shutter & metal Key Board tray, CPU trolley (ebco make). The table should have necessary holes of required sizes for wire managers. The table should have necessary passages & ledges for data cables, electrical cables and telephone lines. The table should be finished with 1.0mm. Thk. Laminate of approved color & shade from external side and 0.8 mm thk. laminate from inside. All the exposed edges of plywood including lower edges should have lipping patti. Lipping patti should be finished in polish. The cost should include necessary hardware Moulding, handles & Godrej make drawer locks etc. complete as per design.	Rmt	8.2		



S.No.	Item	Unit	Qty.	Rate	Amount
15	Providing and supplying table for the R.M table (size 2100x750x750 mm) to be made out of 18/19mm thk. Plywood finished with approved 4.0mm thk high end veneer with polycoat polish for the top & 4.0mm thk veneer with melamine polish for all other exposed areas. The top of the table to have t.w. moulding all around. The rate shall be inclusive of providing a keyboard tray on sliding telescopic channels & a pedestal drawer unit made out of 18 mm thk Plywood on side with 2 nos of equal sized drawers on sliding channels & openable shutter below. The side credenza shall be on the other side & shall be paid for seperately under the relevant item. All internal surfaces to be finished in approved 0.8mm thk laminate. All the external surfaces shall be finished with 4.0mm thk approved high end veneer with melamine polish including the pedestal drawer unit. The table shall have 12 mm thk clear glass on top with bevelled edges and necessary holes and provision of 12 mm glass at front side for Modesty panel. The rate shall also include M/s ebco make CPU trolley & keyboard tray which shall be heavy duty. The necessary hardware such as automatic locking, ball catches, wire managers etc. to be provided as per the instructions of the Engineer. The Elevation of the table shall be as directed by Architect.	Nos.	1		
16	Providing & fixing side unit made up of 18mm. thk. plywood framework & 8mm. thk. plywood as backing. Side unit should have 2/3 no. of drawers above & shutters below. Drawers should be made up of 18 thk. Plywood fascia, 12 thk. Plywood sides & 6 thk. Plywood bottom. Drawers should be mounted on heavy duty drawer sliders. Side unit should be finished with 1.0 mm. thk. Laminate of approved shade & colour on external surface & 0.8 mm. thk. white Laminate of on internal surfac. All exposed edges of 18 thk. & 12 thk. Plywood should have lipping patti All lipping patti's should be finished with polish on it. The cost should include necessary hardware, handles, Godrej make locks etc. complete as per design.				
a	1350 x 450 Laminate finish	Nos.	7		



S.No.	Item	Unit	Qty.	Rate	Amount
17	Providing & fixing of Meeting Room Table with necessary drawer pedestals near the wall all furniture work to be made up of 18 mm thk. Plywood finished with 1 mm thk. Laminate in multicolour with TW moulding for all open edges including melamine polished to external surfaces & 0.8 mm thk. laminate on all internal surfaces and 12 mm thk. bevelled glass as per the given details all accessories etc. complete. (Table size 12 x 4)	Nos.	1		
18	Providing & fixing file storage unit made up of 18mm. thk. plywood framework & 8mm. thk. plywood as backing. storage should have above & below shutters. Unit should be finished with 1.0 mm. thk. Laminate of approved shade & colour on external surface & 0.8 mm. thk. white Laminate of on internal surface. All exposed edges of 18 thk. & 12 thk. Plywood should have lipping patti All lipping patti's should be finished with wood polish on it. The cost should include necessary hardware, handles, Godrej make locks etc. complete as per design.				
a	Low Ht. Storage	Sq.m.	15		
b	Full Ht. Storage	Sq.m.	7.5		
19	Providing & fixing of (450 x 600 x 1220 mm Ht.) Drawer Storage (3nos.) as per drawing made up of 18 mm thk. Plywood of approved make from all sides of drawer shall be operated on heavy duty telescopic channel with necessary handles & locking arrangements. The external surfaces shall be finished with 1 mm thk. laminate & all inner surfaces shall be finished with 0.8 mm the. laminate etc. complete..	Nos.	20		
20	Providing & fixing wall paneling made up of 12 mm plywood & 1 mm laminate in multicolour. 18 gauge 50x50 mm Aluminium section framework at 600 mm c/c both ways (or as directed by the Architect); Paneling should be finished with specified finish as per design. All provisions to be made for all electrical, networking, telephone etc. boxes onto framework at required heights/levels with necessary additional supports &/or scaffolding as required.	Sq.m.	50		



S.No.	Item	Unit	Qty.	Rate	Amount
21	Providing & fixing Paneling out of 6 mm thick ply and 1.0 mm thick laminate of approved shade and make to existing columns , tables , partitions,doors along with necessary accessories required if any etc. Complete as directed by engineer in charge	Sq.m.	35		
22	Providing & fixing of Paneling to column or shutter boxing with 18 mm thk. Plywood & 1 mm laminate in multicolour.18 gauge 50x50 mm Aluminium section framework at 600 mm c/c both ways (or as directed by the Architect); Paneling should be finished with specified finish as per design. All provisions to be made for all electrical, networking, telephone etc. boxes onto framework at required heights/levels with necessary additional supports &/or scaffolding as required.	Sq.m.	18		
23	Providing & Fixing up of Window curtain (Roller blind model) Black out type in required sizes having the following specification: Control unit: The Control unit should be made of high strength reinforced plastic.The clutch is of wrap spring design. High carbon steel springs are provided to transmit motion from drivingto driven members of clutch mechanism. Clutch is operated directionally by the use of endless beaded chain. Clutch never needs any adjustment.Idler: Idler is of high strength reinforced plastic,consisting of a Centre shaft. The metal sleeve inside the plastic lock provides bearing surface for the Centre shaft, which rotates freely, providing smooth, quiet and long wearing operation. Head rail: It is an aluminum extruded rail Powder coated in white. Control unit and Idler are mounted on the Head rail with powder coated M.S. brackets. Roller tube: It is an anodized extruded tube of high strength alloy. Control unit and Idler are fixed to the either ends of the tube. The fabric of the blind is fitted to the tube with heavy duty adhesive tape. Bottom rail: It is an aluminum extruded rail with a groove for fixing the fabric and power coated in white.It is fixed to the bottom of the fabric and the purpose of it is, to keep the fabric in tension and straight.The pitch of the chain corresponds to the sprocket in perfect match for trouble free operation. Material & Color shade will be as per sample approved by the Architect or Engineer in charge. (Make -	Sq.m.	30		



S.No.	Item	Unit	Qty.	Rate	Amount
24	Providing & fixing main door made up of 12 mm thk. Clear toughened glass shall be fixed on Ozone make patch fitting with necessary hardware with application of sealant from all sides. Edge polish for all exposed sides of glass. Complete as per design Door size 7'0" x 3'3" with necessary hardware like floor spring, 12" S.S. finished decorative handle pair, & locking arrangement. Edge polish for all exposed sides of glass. Complete as per design	Sq.m.	4		
25	Providing & fixing of 12 mm thk. Toughened glass partition shall be fixed on Ozone make patch fitting with necessary hardware with application of sealant from all sides. Edge polish for all exposed sides of glass. Complete as per design	Sq.m.	12		
26	Providing & Supplying (Three seater Sofa) Sitting Arrangement with back cushioned sofa work as per detail drawing in waiting area for customers in 19mm thk. BWR Grade of standard make including all cushion work in 75 mm sitting base & 50 mm (back) U- foam of 32 density (I.S.I. Mark) & 25 mm thk. Rubber foam over U-foam of approved make for seat & back with cloth for bottom & sides of approved make & colour etc. complete. As directed by Architect.	Nos.	2		
27	Providing and applying acrylic emulsion paint of approved quality, shade and colour in 2 or more coats to achieve desired result including applying one coat of primer of cement paint, preparing the surface by cleaning the dust/dirt by watering/brushing the surfaces, filling in cracks/crevices ,scaffolding at all levels, necessary lead, lifts etc. complete Rate including Wall Punning : Gypsum wall punning to all internal walls scrapping and making tacchha by gridding	Sq.m.	400		
28	Prepare surface and applying two coats of Synthetic Enamel paint of approved colour and shade over a coat of anti corrosive paint after thoroughly scrapping the existing paint	Sq.m.	150		
	TOTAL OF - A				

Annexture - B

BOQ FOR-ELECTRICAL WORKS OF CENTRAL BANK OF INDIA RO, NAGPUR.

A	SECTION - A				
1	LIGHT POINT WIRING				



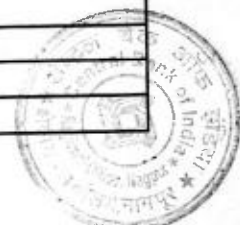
S.No.	Item	Unit	Qty.	Rate	Amount
	Supplying, Installation, Testing & Commissioning of Light Point Wiring using 1100 Volts grade with 3 Nos. of 1.5 Sq.mm. Copper PVC insulated FRLS (flame retardant low smoke) through PVC conduits of 25mm of 16 Gauge thickness. All the wiring below false ceiling on wall must be concealed. All the drops wire from the junction box to the light point must be in flexible pipe with gland at the junction box. (Make: - KEI / RR / Polycab - FRLS) Rate quoted must include the cost of circuit wiring from DB Switchboard & switchboard to switchboard, switches, Conceal Box, Plate and Required Accessories etc. (Make as per list)				
1a	1 Light control by 1 switch	NOS.	100		
1b	2Light control by 1 switch	NOS.	5		
1c	3Light control by 1 switch	NOS.	1		
1d	Glow sign board wiring with 16Amp mcb termination	NOS.	1		
1e	Half Socket Point on Lighting Board.	NOS.	15		
1f	Bell Point With Indicator Type Bell instrument	NOS.	5		
1g	Exhaust Fan Point	NOS.	3		
1h	Ceiling Fan Point With Fan Hook, 120W step type Fan Regulator etc.	NOS.			
1j	POWER POINTS- wiring for 5/16 Amp-6-pin sockets by using 4sq.mm PVC insulated 1100v grade copper conductor wire with independent 2.5 sq.mm earth wire from DB to first and fixing of 16amp. 6-pin socket with 16amp. Switch	Nos	25		
1k	A.C. point- wiring with 2 X 4 sq. mm copper conductor & 1 X 2.5sq. mm copper conductor form AC DB to AC point in 16 swg PVC conduit (1TR & 1.5 TR AC)	Nos	5		
1l	A.C. point- wiring with 2 X 6 sq. mm copper conductor & 1 X 4 sq. mm copper conductor form AC DB to AC point in 16 swg PVC conduit (2TR AC)	Nos	6		
	TOTAL OF SECTION A				
B	SECTION - B				
1	RAW POWER POINT				



S.No.	Item	Unit	Qty.	Rate	Amount
	Supplying, Installation, Testing & Commissioning of raw power socket point on Skirting, Walls, for tables using heavy duty PVC pipe run concealed within Walls / Partition / Work Station etc. The rate shall be inclusive of MS concealed box, switch, socket, surface plate, pvc pipe from junction to point. Rate quoted must include the cost of circuit wiring by using 3 X 2.5 sqmm Copper conductor PVC FRLS wires from DB Switchboard & switchboard to switchboard (Make as per list)				
1a	6 Amps 3 Pin Or 5 Pin Socket and 6 Amps Switch Po	NOS.	45		
2	COMPUTER SOCKET POINT				
2a	Supplying, Installation, Testing & Commissioning of computer socket point on Skirting, Walls for for tables using PVC pipe run concealed within Walls / Partition / Work Station etc. The rate shall be inclusive of MS concealed box, switch, socket, surface plate pvc pipe from junction to point. (Make - MDS /MK / North West) Rate quoted must include the cost of circuit wiring from DB Switchboard & switchboard to switchboard with 3 Nos. X 2.5 Sq.mm. PVC insulated Copper flexible cable in 25/32mm pvc pipe with suitable size PVC Glands for Termination for 3 Nos. of 6 Amps below work station on 8 module plate & 1 No. of 16 Amps SP switch with indicator above work station.	NOS.	45		
2b	1 No. of 6/16 Amps socket with 1 Nos. of 16 Amps SP indicator switch above work station.	NOS.	45		
	TOTAL OF SECTION B				
C	SECTION - C				
1.0	Supply , Installation, connection of SFU 200Amp with HRC Fuse unit 3 nos with 200 Amp neutral link on MS Angal fraim erc completed .	Set	1		



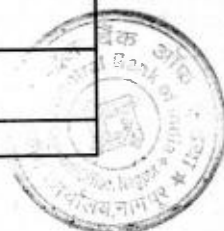
S.No.	Item	Unit	Qty.	Rate	Amount
2	<p>ELECTRICAL PANEL: Design, manufacture, providing, storing & installing in position, effecting proper connection, testing and commissioning of panel made of 14 SWG, CRCA sheet steel. It shall be dust and vermin proof. It shall have compartmentalized construction with bus bar chambers, cable alley, cable glands plate etc. as required, duly painted from inside as well outside. It shall have the following -</p> <p>Incomer : 1 No. 200 Amp. TPN, MCCB (36 KA breaking capacity), Busbars: 300 Amp., 3 phase, 4 strips, 415 volts, 50 Hz. copper busbars with colour coded PVC heat shrinkable sleeves. Instruments. Multi function Meter : for Voltage, Ampere, Power factor, KWH, Data 1 No. with CT 75/5</p> <p>Outgoing. 2 Nos. 125 Amp 25 KA, TPN MCCB 2 Nos. 63 Amp 25KA TPN, MCCB 4 Nos. 40/63 Amp. 10KA TPN. MCB</p>	set	1		
3	Supply and installation of 30 KVAR APFC panel, floor/wall mounted front operated totally enclosed vermin proof, indoor non-drawout-cubicle type power panel fabricated out of 2mm thk CRCA sheet having gasketed hinged cover on each cubicle fully powder coated with following accessories	Set			
a	1No.125A,TP, MCCB as incomer				
b	2 Nos. 25A 3P contactor				
c	2 Nos. 25A MCB				
d	1no. -20 KVAR , 1no.-10 KVAR 3No-5KVA , 1No -3 KVA & 1No- 2KVA Capacitor				
e	Suitable bus bar for connecting the contactors and MCB's, Capacitors				
f	1 no. 6 step APFC relay suitable for above arrangement				
g	ON/OFF/TRIP push button for each capacitor				
h	ON/OFF/TRIP indication lamp for each capacitor				
i	1 Set, RYB, indicating lamps with resistors and fuses for incomer.				
4.0	S/I/T/Commissioning 6 way VTPN DB having	NO.	2		
a	Incoming- 100 A TP MCCB 1 NOS				
b	Outgoing- (i) 63 A TP MCB 5 NOS with all accessories				
	(ii)- 32/20 A SP MCB 3 NOS with all accesses				
	Separate Neutral Bus for Each Phase to be given				
5	LIGHTING CUM RAW POWER DISTRIBUTION BOARD				
	ETPN LDB consist of				
a	Incomer: - 40/32 Amps TPN MCB - 1 No. 40A, 100mA, 2 Pole RCCB per phase				
b	Outgoing: - 10 / 16Amps SP MCB, C-curve - 12 Nos.				



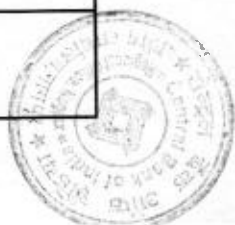
S.No.	Item	Unit	Qty.	Rate	Amount
	(Make: -L&T/ Legrand / Siemens / Merlin Gerin)	SET	1		
5	UPS/INVERTER POWER DISTRIBUTION BOARD				
	12 WAY SPN UPS DB consist of				
a	Incomer: - 40/32 Amps DP MCB - 1 No.				
b	Outgoing: -16/10 Amps SP MCB , D-curve- 10 Nos.				
	(Make: - L&T/ Legrand / Siemens / Merlin Gerin)	SET	2		
5	UPS/INVERTER DISTRIBUTION BOARD				
	8 WAY SPN UPS DB consist of				
a	Incomer: - 40/32 Amps DP MCB - 1 No.				
b	Outgoing: -16/10 Amps SP MCB , D-curve- 6 Nos.				
	(Make: - L&T/ Legrand / Siemens / Merlin Gerin)	SET	2		
6	UPS /INVERTER				
a	6 WayTPN Db (For Ups/Inverter Master Db)	SET	1		
	Incomer: - 63 Amps DP MCB - 1 No.				
	Outgoing: -40/32 Amps DP MCB - 2 No.				
b	SITC of 63/40 Amp TP 10KA MCB in Metalic encloser,for Branch UPS and invertor in put power supply complete in all respect as required	NOS.	2		
c	SITC of 32 Amp TP 10KA MCB in Metalic encloser,for ATM UPS in put power supply complete in all respect as required	NOS.	1		
d	SITC of 40/32 AMP industrial socket along with DPMCB for branch UPS & Inverter output power supply complete in all respect as required.	NOS.	3		
7	Signages Timer-S/I/T/Commissioning of Automatic Timer control for Signages with Automatic Power On / Off to sign board with required capacity of Automatic 24 Hrs Time Delay operation designed for cyclic mode as per I.S. standard etc. complete. (Basic Cost Not Less Then Rs.2500/- Only) (L&T make)	NOS.			
8	AC Cyclic Timer Supply, Installation & Commissioning of Automatic AC Cyclic for 2 nos. of Split/ Window ACs with 1 no. of Real Time Electronic Timer Switch DW219BLK of MK & 2 nos. Contactor/ High Power Relay, Mains ON & AC-1 & AC-2 indicating LED type Lamps, 2A HRC fuse with base for contactor coil & 1 no. 32A DP MCB with Auto/ Manual Switch, in Powder coated MS. Box & all accessories with Elmax make terminals for outgoing/ incoming connections	NOS.	1		



S.No.	Item	Unit	Qty.	Rate	Amount
	TOTAL OF SECTION C				
D	SECTION - D				
1	POWER CABLE & TERMINATION				
a	Supplying, Installation, Testing & Commissioning of LT Cable rated for 1100 Volts AC as per IS Standard with necessary accessories with fine resistance cable. Rates are inclusive of LT Cable Termination of CU/AL with respective following size cable (Make: - Dowells /Jainsons) (Make: - Finolex-FR / Polycab Havells)				
1	3.5 Core X 120 Sq.mm. Aluminum Armoured cable from TRF to Main panel with 8 swg GI wires for earthing	Mtrs.	165		
2	3.5 Core X 70 Sq.mm. Aluminum Armoured cable with 8 swg GI wires for earthing From Main Panel To RO & Branch Panel	Mtrs	25		
3	4 Core X 16 Sq.mm. Cu. Armoured XLPE Cable for AC DB (VTPN) & APFC Panel	mtrs	80		
4	4 Core X 10 Sq.mm. Cu. Armoured XLPE Cable for	Mtrs.	100		
5	4 Core X 6 Sq.mm. Cu. Armoured XLPE Cable for Light DB (VTPN)	Mtrs.	85		
6	4 Core X 4 Sq.mm. Cu. Armoured XLPE Cable for ETPN DB(Power)	Mtrs.	125		
7	3 Core X 4 Sq.mm. Cu. Armoured XLPE Cable for All SPN DBs	Mtrs.	165		
8	3 Nos. X 10 Sq.mm. PVC insulated Copper flexible cable in 32mm pvc Flexible pipe with suitable size PVC Glands for Termination	Mtrs.	20		
9	3 Nos. X 2.5 Sq.mm. PVC insulated Copper Armoured cable for Out door light & Get Light	Mtrs	65		
	TOTAL OF SECTION D				
E	SECTION - E				
1	FLOOR RACEWAYS / CONDUITS				
	Supplying, Installation, Testing & Commissioning of following raceways / conduits manufactured as per sizes given below in flooring. The rate shall be inclusive of removing the flooring by cutter & back filling the same with required Sand, Cement etc. and giving the finishing upto the floor level as per instructions of Architect/bank engineer /Consultant.				
1a	60mm X 40mm X 2mm Aluminum Raceways.	Mtrs.	150		
1b	25mm PVC Pipe for Raceways.	Mtrs.	350		



S.No.	Item	Unit	Qty.	Rate	Amount
2	FLOOR JUNCTION BOX				
	Supplying, Installation, Testing & Commissioning of following GI Junction Boxes in floor of 16 SWG thick duly powder coated. The rate shall be inclusive of providing Sand, Cement etc. and finishing the same upto the floor level as per instructions of the Architect/bank engineer /Consultant.				
2a	150mm X 150mm X 50mm, 16 SWG Junction Box with Stainless Steel Cover Plate.	NOS.	25		
2b	200mm X 200mm X 50mm, 16 SWG Junction Box with Stainless Steel Cover Plate.	NOS.	24		
3c	300mm X 300mm X 40mm, 16 SWG Junction Box with Stainless Steel Cover Plate.	NOS.	6		
	TOTAL OF SECTION E				
F	SECTION - F				
1	LIGHT FIXTURE				
	Supplying, Installation, Testing & Commissioning of following light fixtures complete of approved make as per specification with all fitting, accessories such as Junction Box, Hardware, Starter, Connector, Lamps, Tube etc. (Before Installation Sample must be shown to Architect / Engineer)				
1a	2x2 LED FIXTURE suitable for recess mounting. Aluminium Body Milky Difuser, Powder coated bottom frame with fitting depth of 35mm in ceiling with Headframe & all accessories complete with in built Driver & all required accessories	NOS.	53		
1b	15 watts led downlighter with Aluminium Die Cast complete with in built Driver & all required accessories	NOS.	80		
1c	20W LED 4' Batten fitting Reinforced plastic body, n	NOS.	10		
1d	48" Ceiling Fan of Bajaj/CG/Havells/ Usha with Double ball bearing decorative type as directed by architect	Nos			



S.No.	Item	Unit	Qty.	Rate	Amount
1e	Supply & fixing of 400mm wall fan as directed by architect	Nos	2		
1f	9" Exhaust Fan modular type with bird louvers of Unique / GEC / Crompton make.	NOS.	4		
	TOTAL OF SECTION F				
G	SECTION - G				
	MISCELLANEOUS WORK				
1	Supplying/Installation/Testing & Commissioning of Earthing station with 600 X 600 X 6mm thick GI plate as per IS rule. Rate shall be inclusive of supply installation of GI plate, 25mm dia GI pipe with funnel for water and 450mm Cast Iron cover with its frame. Necessary digging of earth pit, excavation, back filling of earth, electrode, charcoal, salt layer & brick masonry work in proper manner. (The electrode should be buried not less than 4.5 Meters deep and resistance should be not less than 0.5 ohms.)	NOS.	1		
2	Supplying/Installation/Testing & Commissioning of Earthing station with 600 X 600 X 6mm thick CU plate as per IS rule . Rate shall be inclusive of supply installation of 25mm dia GI pipe with funnel for water and 450mm Cast Iron cover with its frame. Necessary digging of earth pit, excavation, back filling of earth, electrode, charcoal, salt layer & brick masonry work in proper manner. (The electrode should be buried not less than 4.5 Meters deep and resistance should be not less than 0.5 ohms.)	NOS.	1		
3	S/I/T/Commissioning of 1 No. of 10 Sq.mm. single core PVC flexible copper wire for UPS in 25mm PVC conduit with all required accessories etc.	Mtrs.	40		
3a	S/I/T/Commissioning of 25mm X 3mm GI Earthing Strip.	Mtrs.	25		
4	Arranging temporary Power & Lighting for all agencies to work . The rate shall include statutory aproval from Local Electrical Inspectorate & other required sataututary bodies, preparation of AS-BUILT drawings, Testing of the installation & prepaarition of test report as required by statutory bodies. Note: The rate to include cost of suitable temporary Lighting for all areas as per requirement during work.	nos			

S.No.	Item	Unit	Qty.	Rate	Amount
5	S/I/T/Commissioning of light censors for cabins /conference room	nos	2		
	TOTAL OF SECTION G				
H	SECTION - H				
	TELEPHONE CABLING				
1a	Supplying, Installation, Testing & Commissioning of 50 pair telephone armoured Jaily cable (Make - Polycab)	RMT	115		
1b	S/I/T/Commissioning of 50 pair telephone tag block with 100 Pair krone module with termination and crimping etc. complete. (Make - Delton / ITL)	NOS.	2		
1c	Supply & installation of Telephone point wiring on workstations/tables/partitions by using 2-pair cable pulled through floor raceways/conduits and taken upto the table top using PVC rigid / flexible conduits run concealed.Each point consists of one RJ-11 jack type telephone socket,MS box flush to the surface, front plate etc & hardware asrequired.Rates are inclusive of PVC CONDUIT PIPE	NOS.	48		
	TOTAL OF SECTION H				
I	SECTION - I				
	NETWORKING & DATA CABLING				



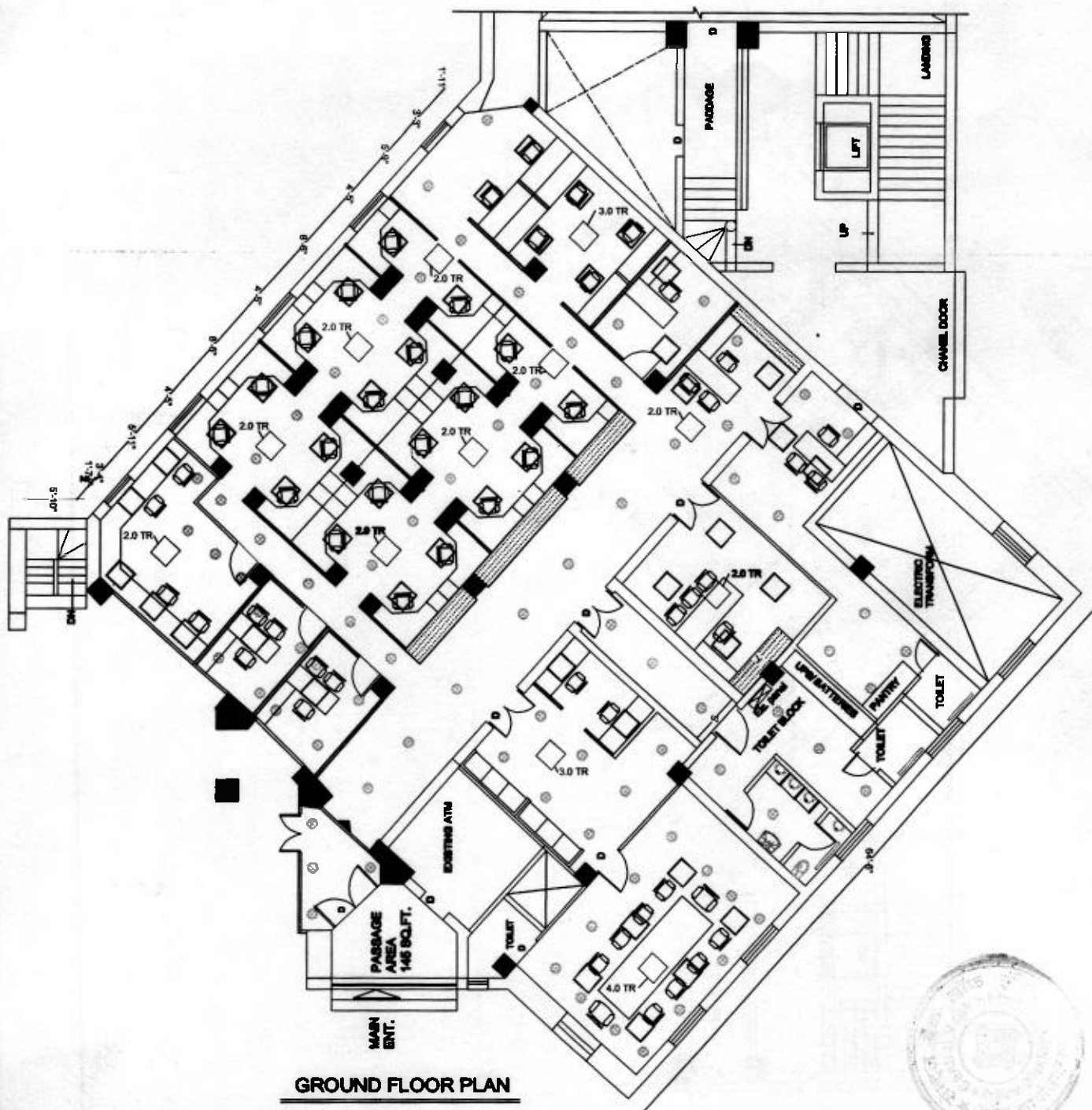
S.No.	Item	Unit	Qty.	Rate	Amount
1a	Providing, fixing, testing and commissioning of all nodes of four pair UTP CAT 6 LAN cables length upto 30 meter length or less as per site condition in suitable size 20/25 mm dia, 16 SWG wall thickness rigid PVC conduit with conduit accessories like bend/junction box/ fan box etc on surface/recessed manner and making good all the damages, painting, cleaning the site etc. complete as required as per site condition and as directed as required. Junction box should be covered with Stainless steel plate with screw with gasket for protection of water/dust. Providing, fixing, testing and commissioning of modular type RJ45 cat-6 I/O information outlet, single / dual / quad type face plate, PVC back box etc. including Termination, Testing, Certification and Documentation of UTP Points and complete system as required with suitable size of MS/PVC modular boxes complete, all accessories with insulation displacement connectors etc suitable for CAT 6 UTP cabling with RJ-45 socket with testing and commissioning of STP cabling with scanner for all the nodes/switches/jack panel complete (Each point/circuit/cable from both load and source end to be marked with ferrules.) Make of Material:- (i) Data Cable, Cat 6 cable, Switch, Jack panel, Rack, Patch cords & Other accessories:- D-Link, Legrand	Nos	45		
1b	Supply of 1 MTR Cat-6 patch cord	Nos	45		
1c	S/I/T/Commissioning of Gigabyte Cat-6 24 port patch panel. (DLINK)	nos	3		
1e	Commissioning of existing 12 U Hub Rack. Reused	nos	1		
	TOTAL OF - B				



S.No.	Item	Unit	Qty.	Rate	Amount
Annexture - C					
BOQ FOR- INSTALLATION OF AIR CONDITIONING UNITS OF CENTRAL BANK OF INDIA RO, NAGPUR.					
	ITEM	UNIT	Qty.	Rate	Amount
1	Installation, Testing & Commissioning of AC's including all required anchor fastner accessories & with One or more times pressure testing with nitrogen at 350 psig, leak testing, rectification, vaccummisation, gas charging, testing & commissioning and balancing of each unit to satisfy that there are no leakages & satisfactory				
a	4.0/3.0/2.0 Tr Cassette	Nos.	12		
b	1.5/1.0 Tr Split AC	Nos.	4		
2	COPPER REFRIGERANT PIPING Thickness - 20 SWG For CASSETTE AC & 22 SWG For Hiwall Split AC complete with fittings Suction / Discharge line insulated with 12 mm SUPERLON/ ARMAFLEX suction line. Multi- runs between Indoor & Outdoor units shall be considered as ONE length for the purpose				
a	3/4" + 3/8" Refrigerant piping - For 4.0/3.0 Tr Cassette AC	Rmt	90		
b	1/4" + 1/2" Refrigerant piping - For Hiwall & Cassette AC	Rmt	210		
3	Electrical Cabling work Electrical cable - Suitable for 4.0/3.0/2.0 Tr Cassette, 2.0 Tr, 1.50 Tr & 1.0 Tr H.W Split. Copper cables from Indoor , Outdoor & Electrical control panel complete with control cabling, ISI marked Only . Main Electrical supply upto Control Electrical panel / outdoor machine.Multi-runs between Indoor & Outdoor units shall be considered as ONE length for the purpose of measurement.(Make: Polycab/RR/Havells/Finolex)				
a	Electrical cable 4C/4.0 Sq.mm (Main Supply Cable)	Rmt	100		
b	Electrical cable 3C/2.5 Sq.mm	Rmt	240		
4	Rigid PVC drain pipe with 6 mm Heatlon insulation complete with fittings, U traps etc. & as specified to the nearest toilet / drain point with all required. Multi-runs between Indoor & Outdoor units shall be considered as ONE length for the purpose of measurement.(Make:Finolex/Supreme/Prince/)				
a	25/30 mm for 2.0, 3.0 Tr & 4.0 tr Cassette AC	RMT	90		
b	20 mm for Hi wall split AC	Rmt	80		

S.No.	Item	Unit	Qty.	Rate	Amount
6	S.I.T.C. Of double epoxit coated MS Stand suitable for the 3.0/4.0 TR Cassette AC outdoor unit complete in all aspect as per the instruction of engineer	Nos.	6		
7	S.I.T.C. Of double epoxit coated MS Stand suitable for the 2.0/1.50 TR split AC outdoor unit complete in all aspect as per the instruction of engineer	Nos.	9		
8	Supply & Installation of Digital, Timer Switch alongwith suitable size enclosure box for signage, etc. including power circuit wiring of (2x4 + 1x4 Sq.mm) FRLS flexible wires laid through PVC conduit directly taken from DB point including all necessary hardware & accessories, etc. complete as required. (Schneider / Hager / Siemens / Legrand or equ. make as approved by client / consultant)	Nos	1		
9	Gas charging & leak test after installation of old air-conditioner. As per the instructions of the Architects/ Engineer	Nos	1		
	Total - C				
	TOTAL				
	ANNEXURE -A				AMOUNT
	ANNEXURE -B				
	ANNEXURE -C				
	GRAND TOTAL IN RUPEES				





PROJECT:

CENTRAL BANK OF INDIA
REGIONAL OFFICE & MAIN BRANCH
LIC SQUARE, NAGPUR

ELECTRIC & A.C. LAYOUT

FLANK:

CHIEF ARCHITECT
CENTRAL BANK OF INDIA
ZONAL OFFICE, PUNE.

LEGEND:

- 1) 18W LED DOWN LIGHTER
- 2) 2' X 2' LED
- 3) 20 W TUBE LIGHT
- 4) ELECTRIC PANEL

DATE: 18/06/2024



CENTRE FOR THE STUDY OF
 ENVIRONMENTAL AND
 ECONOMIC DEVELOPMENT
 ELECTRIC & A/C LAYOUT

ELECTRICAL
 CENTRE FOR THE STUDY OF
 ENVIRONMENTAL AND
 ECONOMIC DEVELOPMENT

BODY:
 1) 10W LED DOWN LIGHT
 2) 2' X 2' LED
 3) 20 W TUBE LIGHT
 4) ELECTRIC PANEL

DATE: 10/10/2024



GROUND FLOOR PLAN

